

LEWIS
HIJSOGEN

LEWIS
LIFTING POINTS

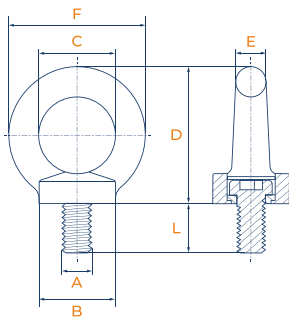


Lewis hoogwaardig stalen oogbout / G80

Lewis high tensile eyebolt / G80



WLL1 = working load limit kettingleng 0°
WLL1 = working load limit 1-leg 0°

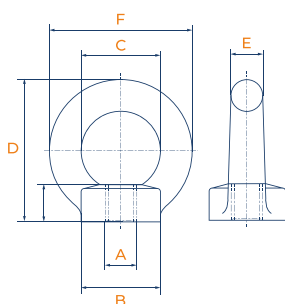


Artikelnr.	A	D	B	C	E	F	L	WLL1	kg/stuk
Part no.	mm	mm	mm	mm	mm	mm	mm	kg (0°)	kg/piece
50801006	M-6	29	17	16	6	28	13	400	0,03
50801008	M-8	36	20	20	8	36	15	800	0,06
50801010	M-10	45	25	25	10	45	18	1.000	0,11
50801012	M-12	53	30	30	12	54	22	2.000	0,18
50801014	M-14	61,5	35	35	14	63	28	3.000	0,28
50801016	M-16	62	35	35	14	63	28	4.000	0,3
50801018	M-18	71	40	40	16	72	30	5.000	0,42
50801020	M-20	71	40	40	16	72	30	6.000	0,45
50801024	M-24	90	50	50	20	90	38	8.000	0,95
50801027	M-27	90	50	50	20	90	38	10.000	0,88
50801030	M-30	109	65	60	24	108	45	12.000	1,76
50801036	M-36	128	75	70	28	126	55	16.000	2,65
50801042	M-42	147	85	80	32	144	65	24.000	4,06
50801048	M-48	168	100	90	38	166	70	32.000	6,38
50801056	M-56	187	110	100	42	184	80	40.000	8,80
50801064	M-64	203	120	110	48	206	90	50.000	12,4

Lewis hoogwaardig stalen oogmoer / G80
Lewis high tensile eyenut / G80

WLL1 = working load limit kettingleng 0°

WLL1 = working load limit 1-leg 0°



Artikelnr.	A	D	B	C	E	F	WLL1	kg/stuk
Part no.	mm	mm	mm	mm	mm	mm	kg (0°)	kg/piece
50802006	M-6	36	17	20	8	36	400	0,049
50802008	M-8	36	20	20	8	36	800	0,05
50802010	M-10	45	25	25	10	45	1.000	0,09
50802012	M-12	53	30	30	12	54	2.000	0,16
50802014	M-14	62	35	35	14	63	3.000	0,24
50802016	M-16	62	35	36	14	63	4.000	0,24
50802018	M-18	71	40	40	16	72	5.000	0,36
50802020	M-20	71	40	40	16	72	6.000	0,36
50802024	M-24	90	50	50	20	90	8.000	0,69
50802027	M-27	90	50	50	20	90	10.000	0,7
50802030	M-30	109	65	60	24	108	12.000	1,3

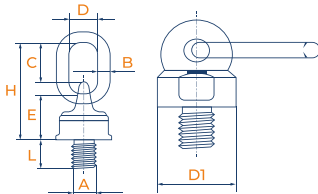
Lewis hoogwaardig stalen oogbout / G80
Lewis high tensile eyebolt / G80

| Draaibaar / gelagerd
| Rotating / ball bearing



WLL1 = working load limit kettingleng 0°
WLL1 = working load limit 1-leg 0°

WLL2 = working load limit kettingleng 90°
WLL2 = working load limit 1-leg 90°



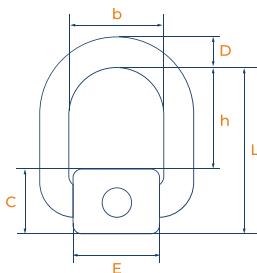
Artikelnr.	A	D	D1	B	C	E	H	L	WLL1	WLL2	kg/stuk
Part no.	mm	mm	mm	mm	mm	mm	mm	mm	kg (0°)	kg (90°)	kg/piece
50806008	M-8	30	36	14	45	27	96	13	600	300	0,45
50806010	M-10	30	36	14	45	27	96	18	1.000	500	0,45
50806012	M-12	30	36	14	45	27	96	18	1.000	500	0,46
50806014	M-14	30	36	14	45	27	96	20	2.000	1.120	0,45
50806016	M-16	30	36	14	45	28	97	20	2.000	1.120	0,46
50806020	M-20	35	50	16	58	40	126	30	4.000	2.000	0,96
50806024	M-24	30	57	18	63	48	151	30	6.300	3.150	1,45
50806027	M-27	40	57	20	63	48	151	35	6.300	3.150	1,47
50806030	M-30	40	66	20	69	61	166	35	10.600	5.300	2,17
50806036	M-36	50	80	22	96	68	205	53	11.800	8.000	4,17
50806042	M-42	50	80	25	96	68	205	63	15.000	10.000	6,72

Lewis aanlasoog / G80
Lewis weld-on ring / G80

| Zonder veer
| Without spring



WLL = veilige belasting (4:1)
WLL = working load limit (4:1)



Artikelnr.	Type	D	b	C	E	h	L	WLL	kg/stuk
Part no.		mm	mm	mm	mm	mm	mm	kg	kg/piece
50761001	ASPK-01	13	41	35	37	37	65,5	1.120	0,4
50761002	ASPK-02	14	42	37	40	48	74	2.000	0,5
507610032	ASPK-032	18	45	40	42,5	46	77	3.150	0,7
50761005	ASPK-05	22	55	52	61	53	96	5.300	1,5
50761008	ASPK-08	26	70	57	70	67	114,5	8.000	2,5
50761015	ASPK-15	34	97	77	90	92	154	15.000	5,9